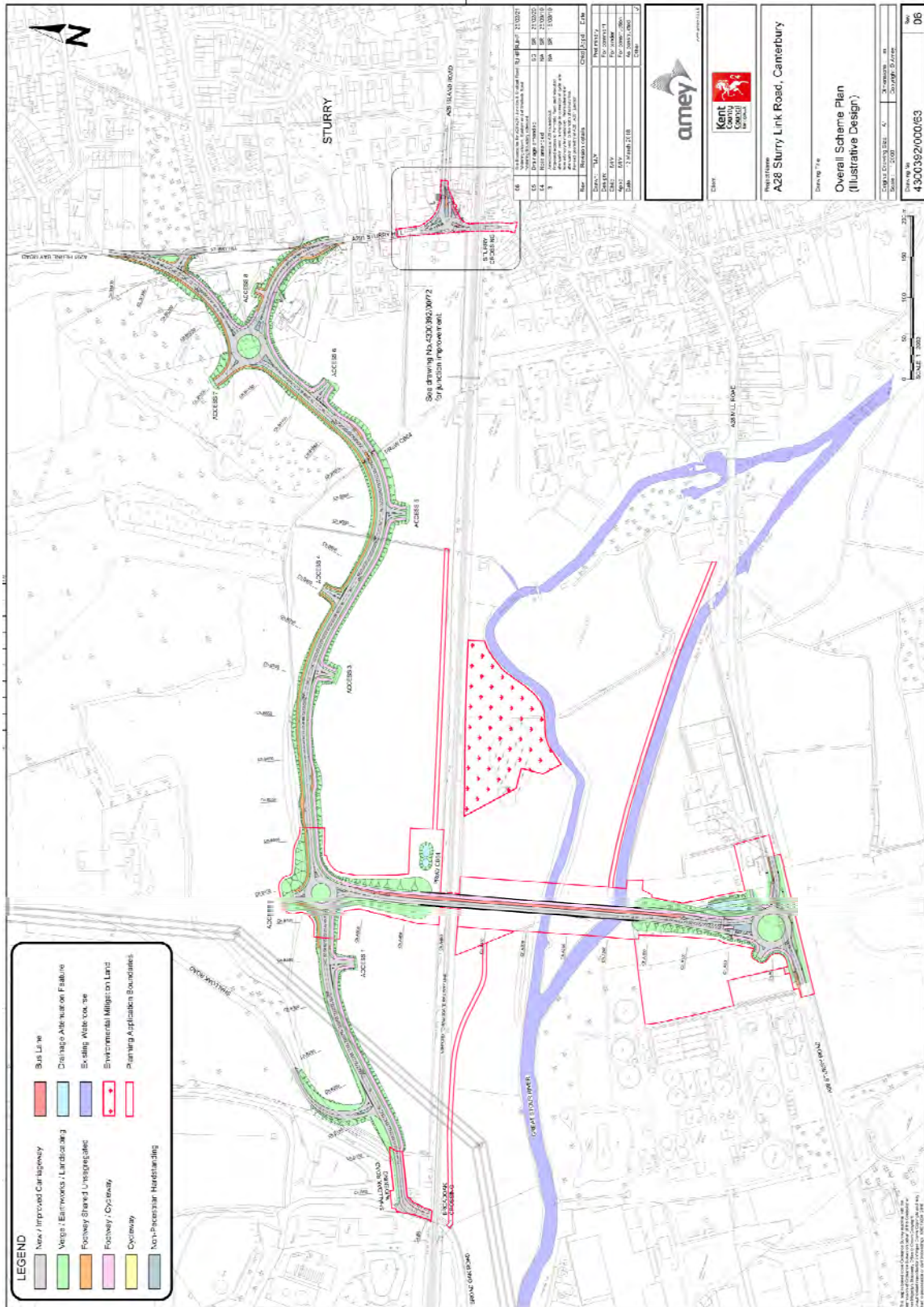




Construction of part of a new road (A28 Link Road) including viaduct between A28 Sturry Road and A291 Sturry Hill and associated on-line improvements at A28 Sturry Link Road, Sturry, Canterbury – CA/19/00904 (KCC/CA/0091/2019)

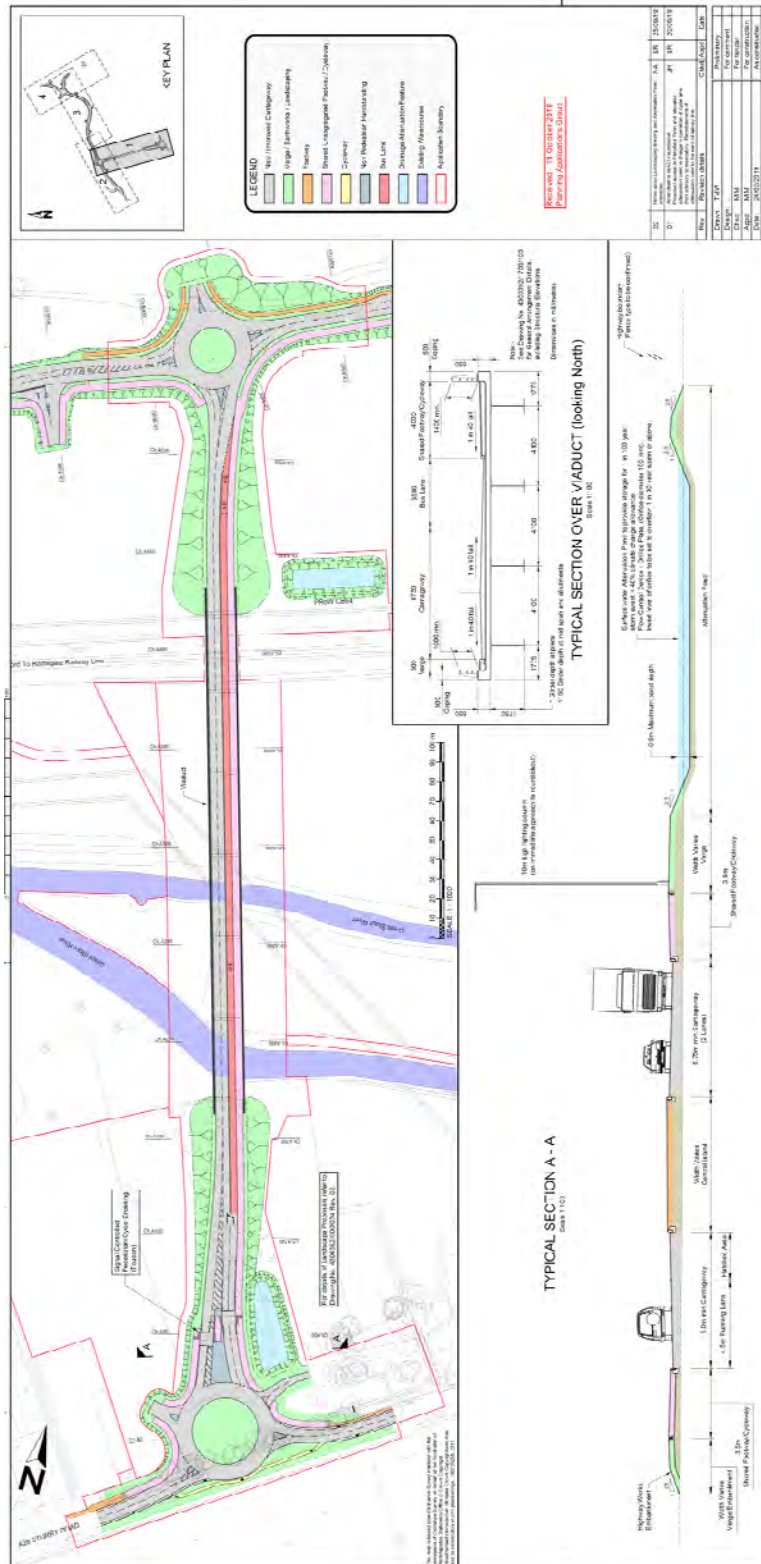
**Scheme Plan**





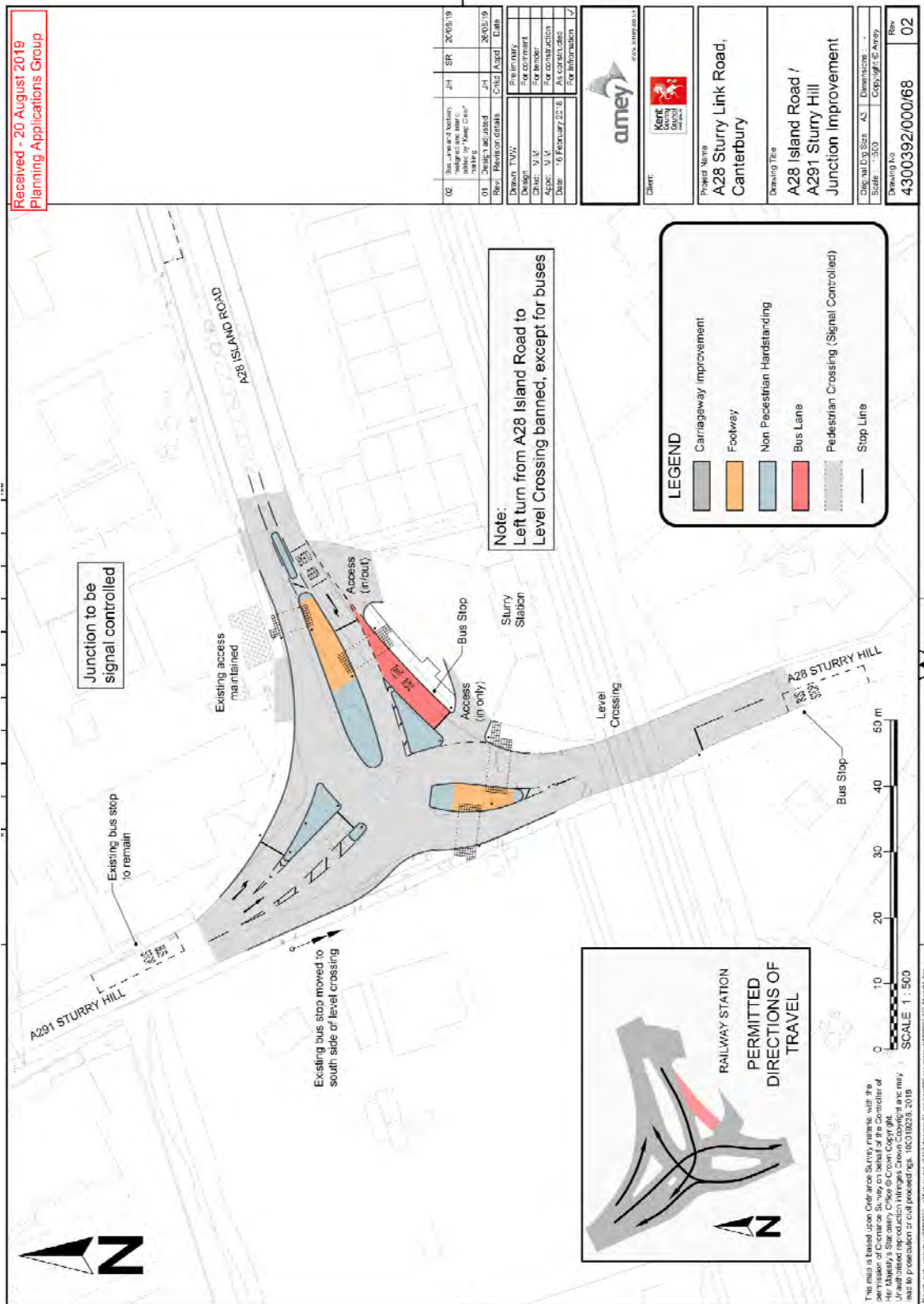
Construction of part of a new road (A28 Link Road) including viaduct between A28 Sturry Road and A291 Sturry Hill and associated on-line improvements at A28 Sturry Link Road, Sturry, Canterbury – CA/19/00904 (KCC/CA/0091/2019)

Road Layout from A28 across the river and railway line into 'Land at Sturry'



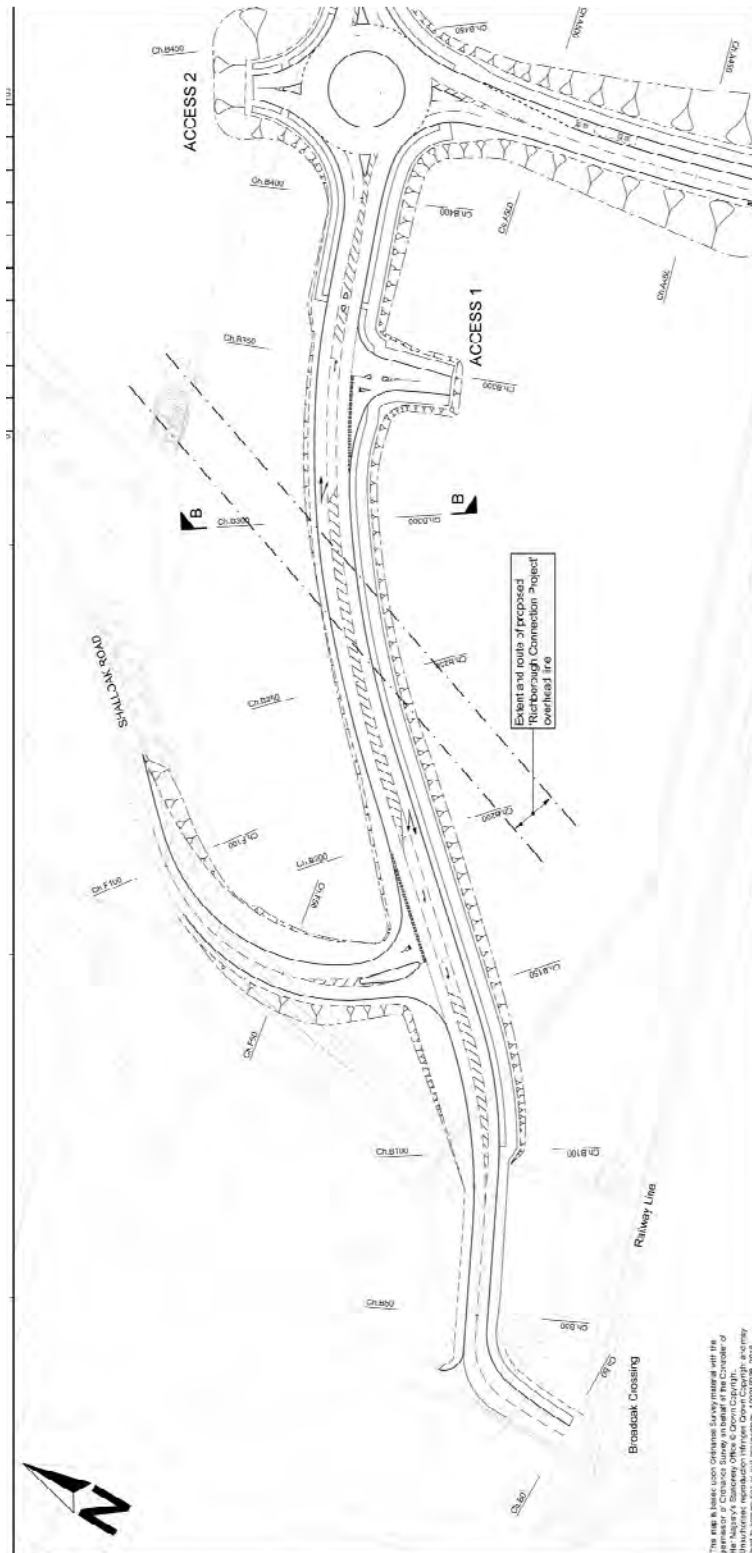
Construction of part of a new road (A28 Link Road) including viaduct between A28 Sturry Road and A291 Sturry Hill and associated on-line improvements at A28 Sturry Link Road, Sturry, Canterbury – CA/19/00904 (KCC/CA/0091/2019)

**A28/A291 Junction Layout Alterations**



Construction of part of a new road (A28 Link Road) including viaduct between A28 Sturry Road and A291 Sturry Hill and associated on-line improvements at A28 Sturry Link Road, Sturry, Canterbury – CA/19/00904 (KCC/CA/0091/2019)

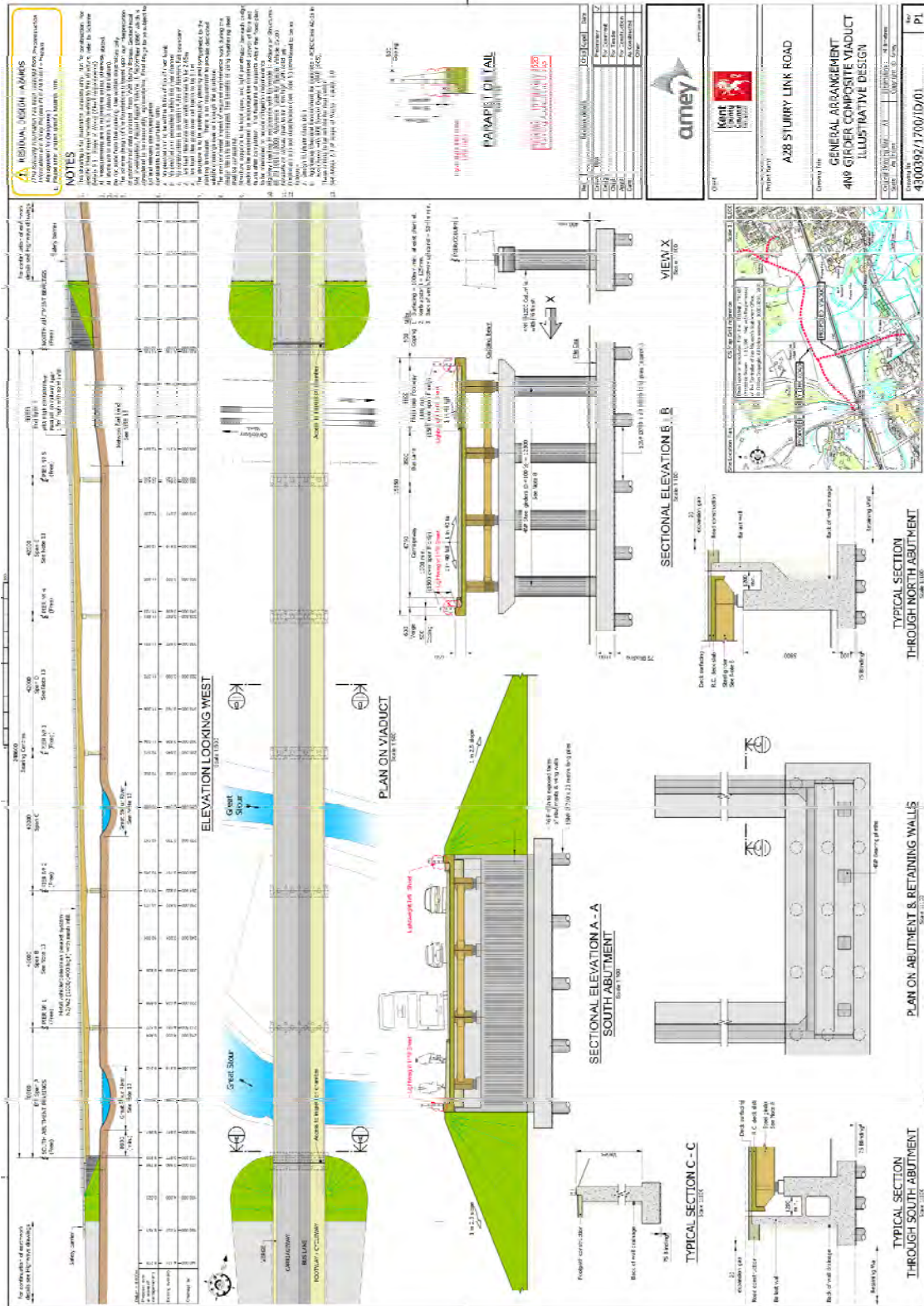
### Shalloak Road Widening





Construction of part of a new road (A28 Link Road) including viaduct between A28 Sturry Road and A291 Sturry Hill and associated on-line improvements at A28 Sturry Link Road, Sturry, Canterbury - CA/19/00904 (KCC/CA/0091/2019)

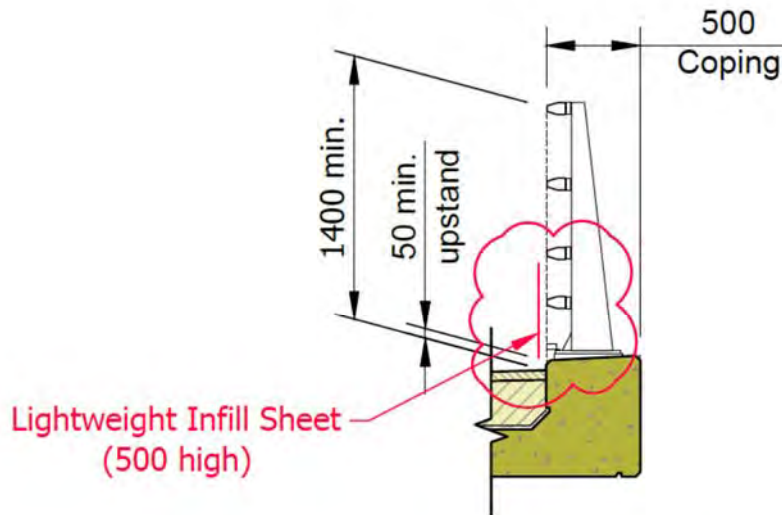
Viaduct General Arrangement



Construction of part of a new road (A28 Link Road) including viaduct between A28 Sturry Road and A291 Sturry Hill and associated on-line improvements at A28 Sturry Link Road, Sturry, Canterbury – CA/19/00904 (KCC/CA/0091/2019)

---

**Parapet Detail**



**PARAPET DETAIL**

Scale 1:50

Construction of part of a new road (A28 Link Road) including viaduct between A28 Sturry Road and A291 Sturry Hill and associated on-line improvements at A28 Sturry Link Road, Sturry, Canterbury – CA/19/00904 (KCC/CA/0091/2019)

Landscape Strategy





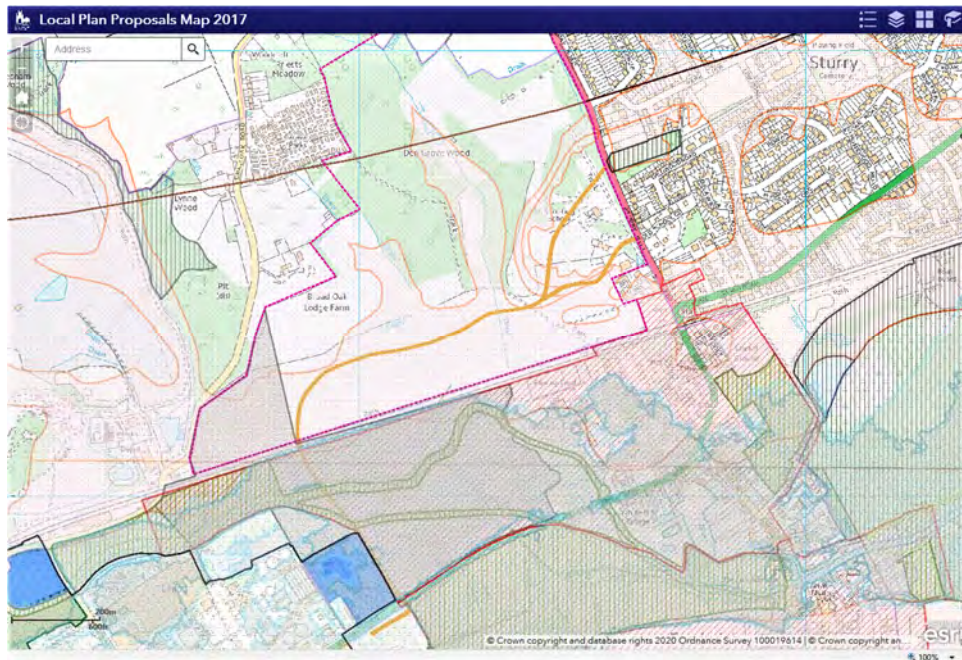






Construction of part of a new road (A28 Link Road) including viaduct between A28 Sturry Road and A291 Sturry Hill and associated on-line improvements at A28 Sturry Link Road, Sturry, Canterbury – CA/19/00904 (KCC/CA/0091/2019)

**Canterbury City Council Local Plan Extract**



Road Safeguarding Area T14 ■  
Sturry Relief Road

Strategic Allocation SP3 □  
Land at Sturry/Broad Oak



Conservation Area ▣

Listed buildings ●









Construction of part of a new road (A28 Link Road) including viaduct between A28 Sturry Road and A291 Sturry Hill and associated on-line improvements at A28 Sturry Link Road, Sturry, Canterbury – CA/19/00904 (KCC/CA/0091/2019)

**Air Quality Management Area – Canterbury No. 3**

